

ROTARY SIFTER & LENGTH GRADER

FRS & FLG - 20 / - 40 – 80 / - 120

N.P.T GROUP



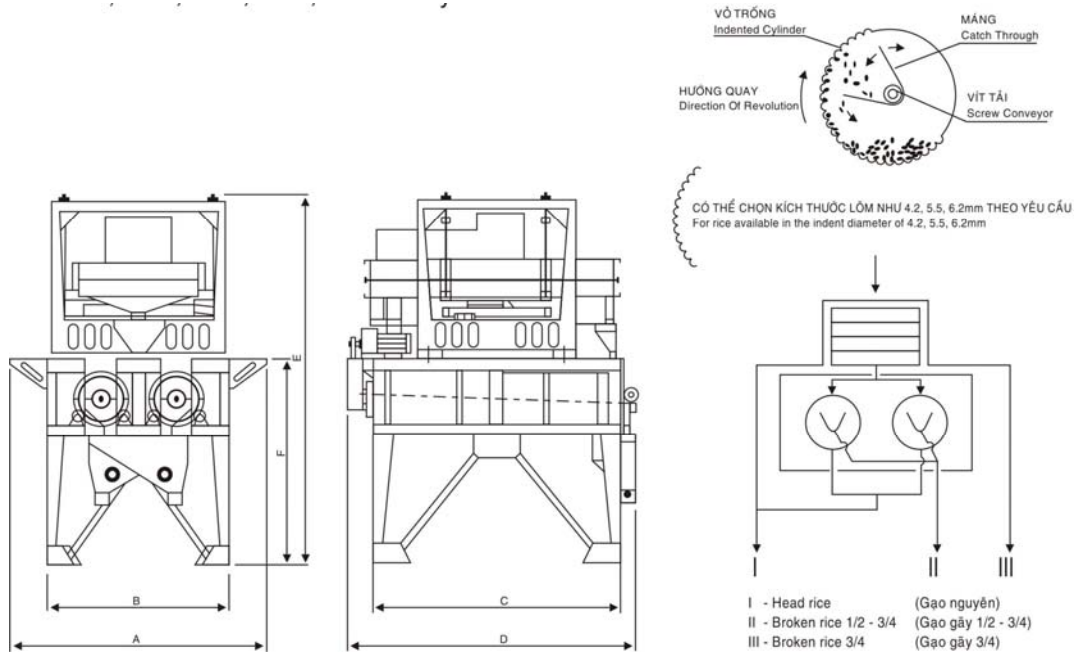
FEATURES:

- Smooth, horizontal circular motion for efficient separation.
- Well balanced vibration structure.
- It is very easy for you to replace the screens.
- No bran clogging in the screens by rubber ball screen cleaner.
- No vibration and separating partitions are freely adjustable.
- Evaluation of your investment, high or low, in equipment depends on how high-valued a merchandise you get from it.

OPERATIONS:

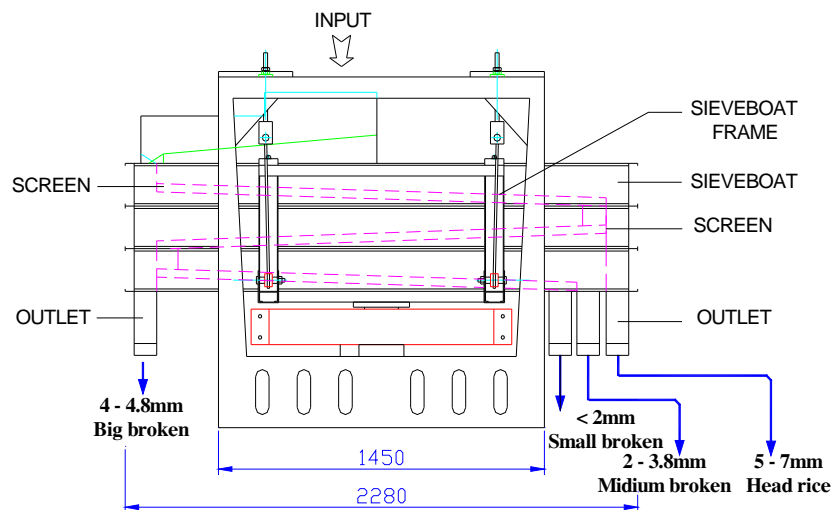
- For system adjustment and cleaning, it is highly recommended first to run through with low quality rice.
- Choose the correct screen perforations to suit your batch of rice.
- Monitor carefully to set the maximum and ideal feeding to ensure optimum grading and separation efficiency.
- The electrical motor must be protected with overload protector.
- Once the system is properly adjusted and cleaned, operation with high quality can follow.
- Finer adjustment could be made possible in balancing the hanging wires in order to control the thickness and flow (speed) of rice in the system.
- Rotary Sifter and Length Grader are applied to separate broken rice and head rice, with structure of grader incination can adjust the trough of broken rice, allow separate rice 5%, 10%, 20%, 25% of broken.

<p>NPT Group H.O: 161/28/21 Binh Tri Dong Street Binh Tan District, HCMC Vietnam.</p> <p>Tel: +848. 54072938 Cell: +84 918 183 497 Fax: + 848. 62601256 E-mail: engineering@npt-group.com</p>	<p>Varesin B.O: Local 13 Corregimiento Pueblo Nuevo Urbanizacion Las Praderas Panama.</p> <p>Tel/Fax: + 224-2575, 392-3575 Tel/Cell: + 6614-1826 Website: www.faricela.com E-mail: ventas@faricela.com</p>	<p>Distributors:</p>
--	---	-----------------------------



DIMENSIONS:

Model	Input Capacity (T/hr)	Required power (kW)	Main shaft revolution (rpm)	Outside dimensions (mm)				Weight (kg)
				A	B	C	D	
FRS20-FLG20	1-2	1.1 + 0.75	155-38	A=2150	B=1350	C=2560	D=3000	700
FRS40-FLG20	3-4	1.1 + 1.1	155-38	A=2440	B=1640	C=2560	D=3000	900
FRS80-FLG30	6-8	1.5 + 1.5	155-38	A=2600	B=1800	C=3560	D=4000	1150



NPT Group

H.O: 161/28/21
Binh Tri Dong Street
Binh Tan District, HCMC
Vietnam.

Tel: +848. 54072938
Cell: +84 918 183 497
Fax: + 848. 62601256
E-mail: engineering@npt-group.com

Varesin

B.O: Local 13
Corregimiento Pueblo Nuevo
Urbanizacion Las Praderas
Panama.

Tel/Fax: + 224-2575. 392-3575
Tel/Cell: + 6614-1826
Website: www.faricela.com
E-mail: ventas@faricela.com

Distributors: